

Name _____ Date _____

High-Frequency Syllable Fluency • Part 1



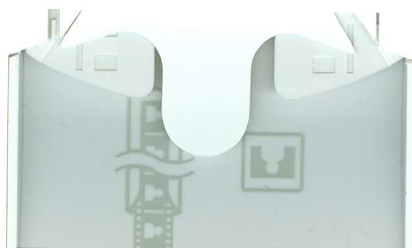
Read It

1. Underline the target syllable in each word.
2. Practice reading the words.
3. Cut apart the word cards.
4. See how fast you can sort the words by common syllable.

Syllables 11–20

e	election	enormous	eliminate
con	contact	construct*	concentration
y	stormy	pushy	rubbery
ter	terrific	external	bitterly
ex	exit	export	external
al	colonial	memorial	territorial
de	define	design	decompose
com	comment	complex	accommodate
o	radio	rodeo	studio
di	diner	dilate	diversity

- For Part 2, make a copy of the reproducible on page 159 for each student.



Name _____ Date _____

High-Frequency Syllable Fluency • Part 1



Read It

1. Underline the target syllable in each word.
2. Practice reading the words.
3. Cut apart the word cards.
4. See how fast you can sort the words by common syllable.

Syllables 11–20

e	election	enormous	eliminate
con	contact	construct*	concentration
y	stormy	pushy	rubbery
ter	terrific	external	bitterly
ex	exit	export	external
al	colonial	memorial	territorial
de	define	design	decompose
com	comment	complex	accommodate
o	radio	rodeo	studio
di	diner	dilate	diversity

- For Part 2, make a copy of the reproducible on page 159 for each student.

